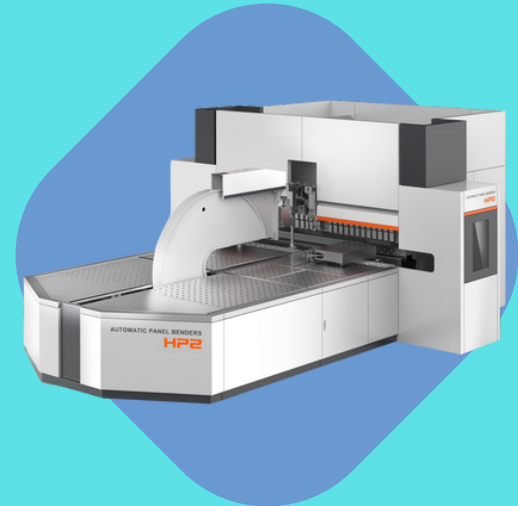




# PRODUCT CATALOG

2025





ŞAHMAKSAN

MAKİNA  
Metal Process Expert

# Content

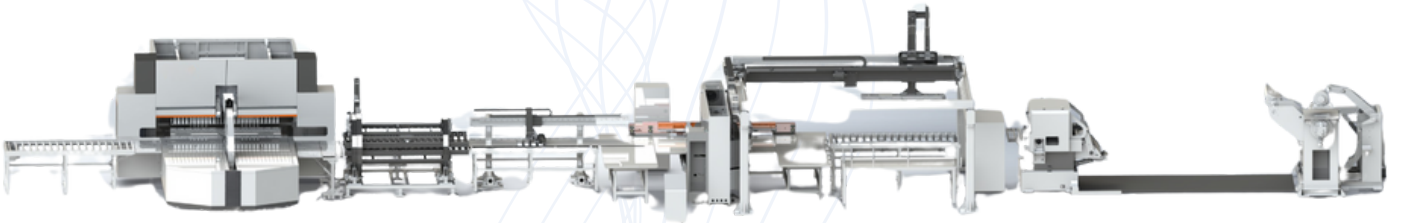
**1** About Us

**2** Press Brake

**3** Press Brake Models

**6** Key Features

**7** Options

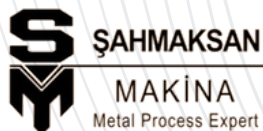
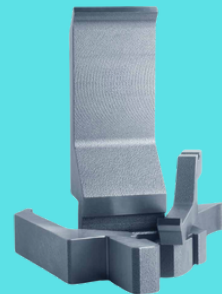


**8** Full Automatic Panel Bender

**9** Semi-Automatic Panel Bender

**10** Press Brake Molds

**11** Contact



# 1

**S** ŞAHMAKSAN  
**M** MAKİNA  
Metal Process Expert

## Who We Are?

Your Reliable  
Solution Partner  
for Industrial  
Equipment

Şahmaksan Makina was established in 2021 with 17 years of industry experience and specializes in industrial equipment such as sheet metal processing machines, press brakes, bending centers, and laser hand welding. In addition to sales of new and second-hand machines, it provides uninterrupted production support through its service offerings. With a wide stock of spare parts and consumables, the company offers time and cost savings to its customers. Furthermore, it develops services that increase efficiency through production line systems and unmanned production solutions. By investing in technology and keeping up with industry innovations, our company operates with the vision of being a reliable business partner.



# Press Brake

Our press brakes are manufactured by our expert team with knowledge and experience. Our expertise and experience in the industry enable us to provide our customers with the highest quality and most reliable press brake solutions.

In our manufacturing process, we place special emphasis on achieving the highest durability and performance with a rigid, monoblock body structure. This design provides an ideal solution for precise and high-speed bending operations.

The highest quality components and technology used in our manufacturing process not only provide our customers with stable and reliable performance but also promise long-lasting use. Our production process, where every detail is meticulously examined, is designed to meet our customers' expectations at the highest level.



Şahmaksan Hydraulic Press Brake is designed to meet your industrial bending needs and maintains excellent performance even under the most challenging working conditions. With our commitment to reliability, precision, and durability, we continue to stand by our customers to make their jobs easier and increase their productivity.




Our press brakes offer an animated preview feature before bending with the graphic display. This allows for the prevention of potential errors during the process.

It comes standard with a 2-axis rear support.




# Press Brake

 TURKUAS BENDING	Force	Bending Length (mm)	Distance Between Columns (mm)	Stroke (mm)	Daylight (m)	Throat (mm)	Table Height (mm)	Main Motor
Model	Ton	A	B	C	J	D	E	Power (kw)
<b>SZ-520</b>	20	500	450	210	410	310	250	2
<b>SZ-1120</b>	20	1100	900	210	465	310	755	2
<b>SZ-1340</b>	40	1300	1100	210	465	310	755	4
<b>SZ-1360</b>	60	1300	1100	210	465	310	755	5,5
<b>SZ-1640</b>	40	1600	1200	210	465	310	765	5,5
<b>SZ-1660</b>	60	1600	1200	210	465	310	765	5,5
<b>SZ-2160</b>	60	2100	1600	260	465	410	800	5,5
<b>SZ-2660</b>	60	2600	2150	260	465	410	800	5,5
<b>SZ-2680</b>	80	2600	2100	260	465	410	800	5,5
<b>SZ-26100</b>	100	2600	2150	260	465	410	800	7,5
<b>SZ-26135</b>	135	2600	2100	260	465	410	800	11
<b>SD-31100</b>	100	3100	2600	260	465	410	850	7,5
<b>SD-31135</b>	135	3100	2600	260	465	410	850	11
<b>SD-31175</b>	175	3100	2600	260	465	410	850	15




# Press Brake

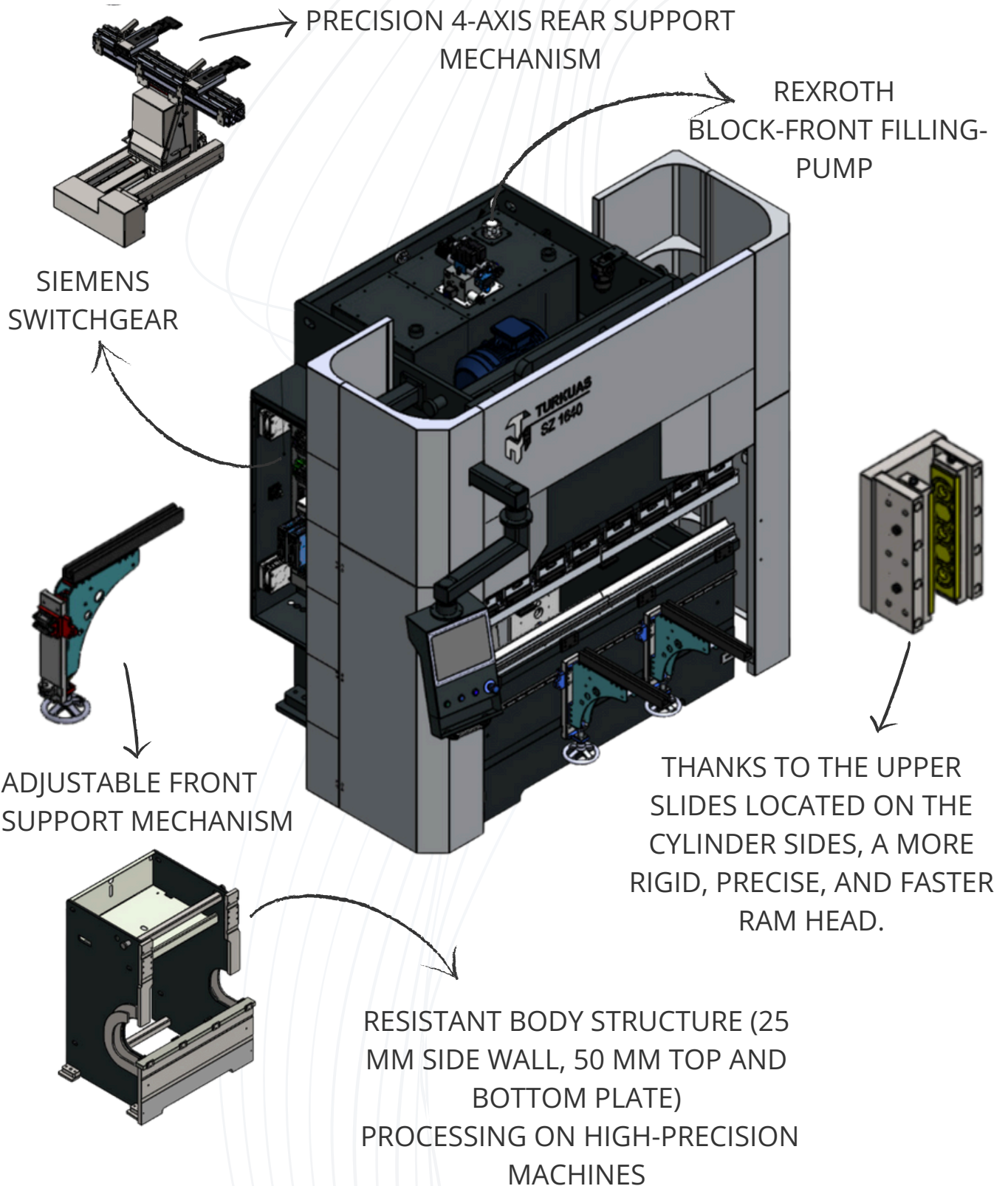
 TURKUAS BENDING	Force	Bending Length (mm)	Distance Between Columns (mm)	Stroke (mm)	Daylight (m)	Throat (mm)	Table Height (mm)	Main Motor
Model	Ton	A	B	C	J	D	E	Power (kw)
<b>SD-31220</b>	220	3100	2600	260	465	410	850	18,5
<b>SD-31270</b>	270	3100	2600	260	465	410	850	22
<b>SD-31320</b>	320	3100	2600	260	485	410	955	22
<b>SD-31400</b>	400	3100	3200	310	535	410	1015	30
<b>SD-37135</b>	135	3700	3200	260	465	410	850	11
<b>SD-37175</b>	175	3700	3200	260	465	410	850	15
<b>SD-37220</b>	220	3700	3200	260	465	410	850	18,5
<b>SD-37320</b>	320	3700	3200	260	485	410	955	22
<b>SH-41100</b>	100	4100	3600	260	465	410	850	7,5
<b>SH-41135</b>	135	4100	3600	260	465	410	850	11
<b>SH-41175</b>	175	4100	3600	260	465	410	850	15
<b>SH-41220</b>	220	4100	3600	260	465	410	850	18,5
<b>SH-41270</b>	270	4100	3600	260	465	410	850	22
<b>SH-41320</b>	320	4100	3600	260	485	410	955	22



# Press Brake

 TURKUAS BENDING	Force	Bending Length (mm)	Distance Between Columns (mm)	Stroke (mm)	Daylight (m)	Throat (mm)	Table Height (mm)	Main Motor
Model	Ton	A	B	C	J	D	E	Power (kw)
<b>SH-41400</b>	400	4100	3600	310	535	410	1015	30
<b>SH-41500</b>	500	4100	3600	310	535	410	1015	37
<b>SU-51220</b>	220	5100	4200	260	515	410	955	18,5
<b>SU-51320</b>	320	5100	4200	260	485	410	1015	22
<b>SU-51400</b>	400	5100	4200	310	535	410	1015	30
<b>SU-51500</b>	500	5100	4200	310	535	410	1015	37
<b>SU-61220</b>	220	6100	5100	260	485	410	1015	18,5
<b>SU-61320</b>	320	6100	5100	260	485	410	1015	22
<b>SU-61400</b>	400	6100	5100	310	535	410	1015	30
<b>SU-61500</b>	500	6100	5100	310	535	410	1015	37

# Key Features





# Options



- STEP RK12"
- STEP RK15"
- STEP RK22"

\*The images on the side are provided in order..

- ESA S630 STANDART 10" 4 AXIS
- ESA S640 15" 6 AXIS
- ESA S650 15" 12 AXIS

\*The image on the side belongs to the ESA S650 model.



- DELEM 53T 10"
- DELEM 58T 15"
- DELEM 66T 17"

\*The image on the side belongs to the DELEM 66T model.

- CYBELEC CT 8T STANDART 7" 4 AXIS
- CYBELEC CT 12T 12" 4 AXIS
- CYBELEC CT 15T 15" 6 AXIS

\*The image on the side belongs to the CYBELEC CT 15T model.



# Panel Bender

## Full Automatic

Şahmaksan Panel Bender simplifies bending operations in industrial production while providing operators with the opportunity to save time and effort.

With its user-friendly interface and fully automatic processing capabilities, it reduces the workload of operators while accelerating and optimizing bending operations. This system, which ensures high precision and repeatability in panel bending, delivers seamless performance in industrial production processes.

Our Fully Automatic Panel Bender is compatible with the production line system. The sheet metal enters the machine and exits the line as a processed product. Additionally, thanks to the vacuum manipulator holder, the bending dimension can be reduced to 140x190 mm.



Thick Foldable Sheet



Universal Mold



Automatic Tool Change



Precision Feeding



Efficient Software

Features Model	Max. Length of Loading Plate (mm)	Max. Width of Loading Plate (mm)	Bending Height (mm)	Min. Forming Size for 4-Sided Forming (mm)	Bending Height with Optional Bending Knife (mm)	Min. Forming Size for Double-Sided Forming (mm)	Space Between Upper and Lower Knives (mm)	Bending Angle	Max. Thickness (mm) Mild Steel, UTS410N/mm <sup>2</sup>	Weight (Ton)	Dimension (U*G*Y) (mm)
HMBC-2202	2500	1500	200	430*250	140	190	235	0-180°	2	27,00	6580* 4800* 2800
HMBC-2502	2200	1500	200	430*250	140	190	205	0-180°	2	30,00	6800* 4800* 2800
HMBC-2503	2200	1500	200	430*250	140	190	205	0-180°	3	36.5	6800* 4800* 2800
HMBC-3002	3000	1500	200	430*250	140	190	205	0-180°	2		7400* 5200* 2800
HMBC-3502	3500	1500	200	430*250	140	190	205	0-180°	2	38,00	8000* 5680* 2800



# Panel Bender

## Semi-Automatic



Equipped with advanced technology, our Semi-Automatic Panel Bender ushers in a new era in precision panel bending, combining low cost with high efficiency.

Equipped with advanced bending technology, our Panel Bender offers a wide range of bending capabilities for various materials and adapts to all types of industrial applications. Manufactured from high-quality materials and subjected to rigorous quality control processes, this system promises long-lasting and reliable performance.



Thick Foldable Sheet



Universal Mold



Low Cost, High Efficiency



Precision Feeding



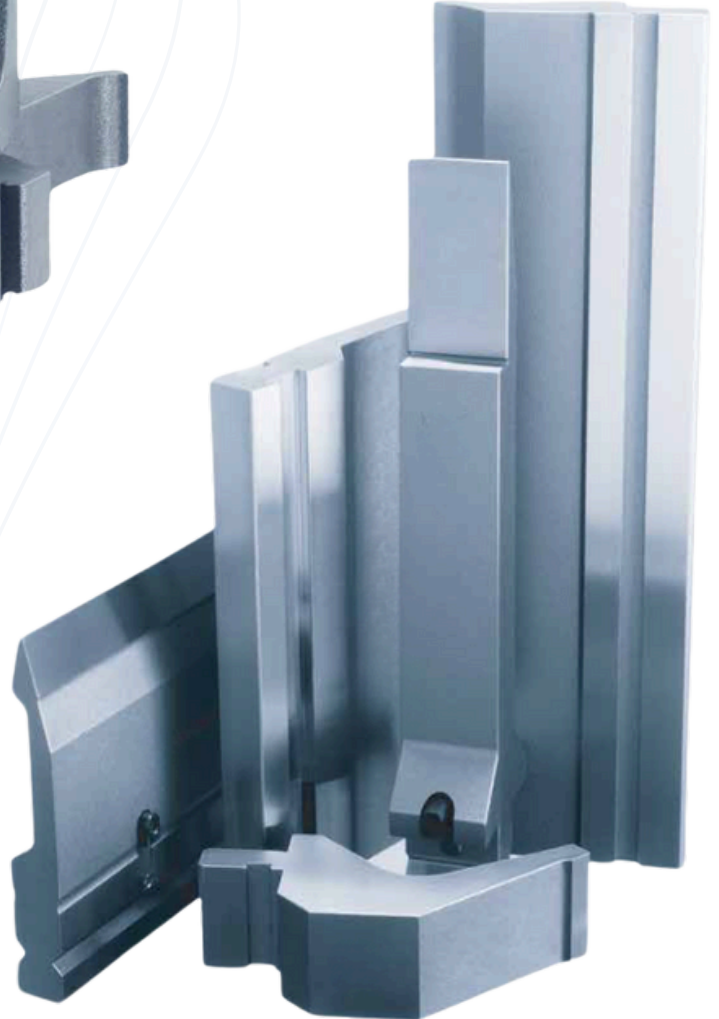
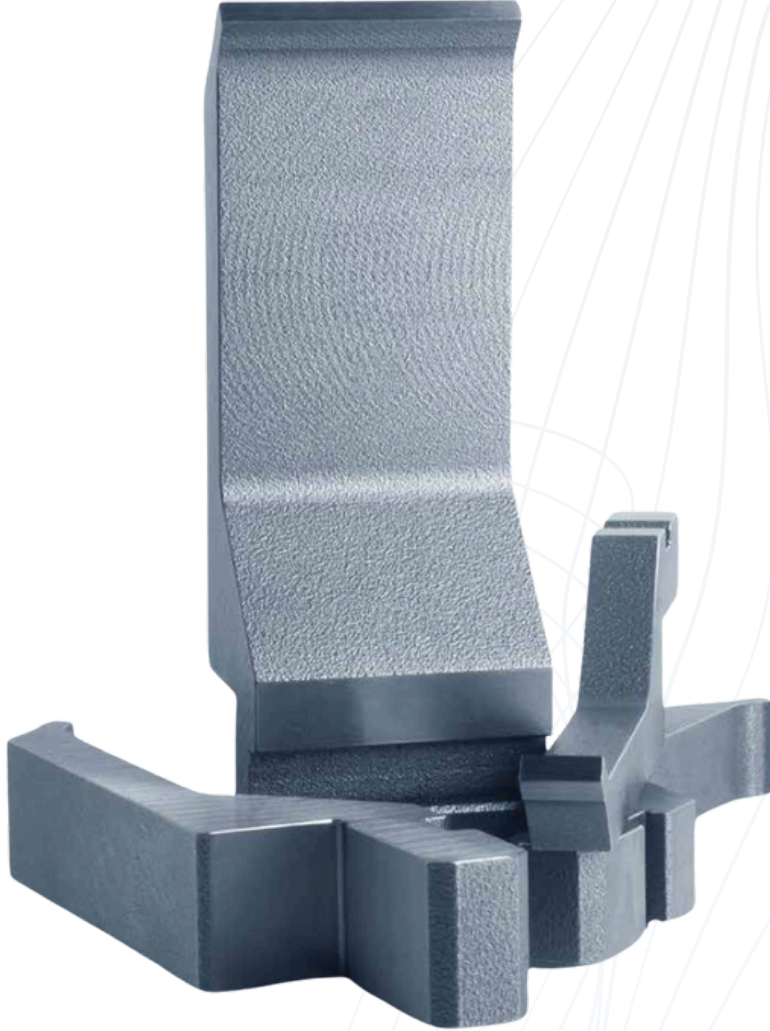
Efficient Software

Features Model	Max. Length of Loading Plate (mm)	Max. Width of Loading Plate (mm)	Bending Height (mm)	Min. Forming Size for 4-Sided Forming (mm)	Bending Height with Optional Bending Knife (mm)	Min. Forming Size for Double-Sided Forming (mm)	Space Between Upper and Lower Knives (mm)	Bending Angle	Max. Thickness (mm) Mild Steel, UTS410N/mm <sup>2</sup>	Weight (Ton)	Dimension (L*G*Y) (mm)
EMBC-1402	1400	1400	170	260*190	/	190	175	0-180°	1,5	15,00	5200* 2200* 2455
EMBC-1401	1400	1400	170	260*190	/			0-180°	1		5200* 2200* 2455
EMBC-2202	2500	1500	200	260*190	/	190	235	0-180°	2	22,00	6100* 2700* 2920
EMBC-2502	2200	1500	200	260*190	/	190	205	0-180°	2	25,00	6100* 2700* 2920
EMBC-3002	3000	1500	200	260*190	/	190	205	0-180°	2		6100* 2700* 2920
EMBC-3502	3500	1500	200	260*190	/	190	205	0-180°	2	35,00	7600* 4210* 2700

# Press Brake Molds

Şahmaksan offers a wide range of products by combining its expertise with quality and reliability to meet the diverse needs of its customers.

Each die is meticulously manufactured from the highest quality materials, ensuring durability and reliability. With high precision and sharp details, Şahmaksan Press Brake Molds become an indispensable choice for industrial bending operations. Every die undergoes rigorous quality control procedures, guaranteeing that customers achieve results that meet the highest standards.



Şahmaksan specializes in Press Brake Molds, a fundamental element in industrial bending operations. Offering top-level performance in precision, durability, and efficiency, Şahmaksan Press Brake Molds enable businesses to optimize their production processes.

Choose Şahmaksan Press Brake Molds to ensure success in industrial production and maximize your business's potential.

# Contact

## Head Office

**phone** [+90 \(541\) 352 53 58](tel:+905413525358)  
**address** Tatlısu Mahallesi Arif Ay Sokak No: 40/4 MTK Plaza PK:34774  
Ümraniye / İstanbul  
**e-mail** [info@sahmaksan.com.tr](mailto:info@sahmaksan.com.tr)

## Black Sea Regional Office

**phone** [+90 \(543\) 298 51 39](tel:+905432985139)  
**address** Mevlana Mahallesi PK:55400  
Bafra / Samsun  
**e-mail** [info@sahmaksan.com.tr](mailto:info@sahmaksan.com.tr)